

Class of 1980



Mishawaka High School

30th Reunion

July 31, 2010

*Cover designed by:
Paul Modlin*

*Written by:
Jen Hamman Nijak*

“MARCH, MARCH ON DOWN TO FAME/FIGHT ON MISHAWAKA”

(From the tunes “Down the Field” and “105th Calvary March”)

**“March, march on down to fame
We’re out to win this game
Our coach and all his men
Are just what they seem.
So give a loud cheer for Mishawak!
Hear all those Boosters talk!
_____ High may fight to the end,
But we will win!**

**Fight on Mishawaka,
Live up to your name.
Raise high all you r standards
Spread around you all your fame!
We’re marching to victory,
Won’t stop till we’re there.
So fight Mishawaka
Fight and WIN THIS GAME!**



Have you ever wondered where the Cavemen got their name?

Well, it all happened like this – back in 1926, after Central’s Coach Kuhny’s “B” team had won a basketball tournament, they received quite a bit of publicity. So someone suggested that they have a nickname. They called them the “Kuhny’s Cubs”. Later on they decided to call the varsity the “Bears” and that’s how Central got their nickname.

In the fall of 1926 after Central had chosen a nickname, Mishawaka thought that they should have a nickname too. For hours and hours they considered different names. Finally, it was decided that the only thing that would take the Bears would be the cavemen and thus, came the nickname “Cavemen”.



THE HISTORY OF MISHAWAKA HIGH SCHOOL

The first Mishawaka High School was proposed by the Mishawaka Town Board in May, 1873. It was a three-story building located on the corner of Hill Street and West Second Street (now Lincoln Way West) on the site of the Main Junior High School playground. On the third floor was Whitson Hall, used only for entertainment and graduation exercises. Five rooms on the second, including two grade rooms and three other rooms, were used for high school. On the first floor, there were five other class rooms.

The first second board consisted of W. W. Butterworth and J. Q. C. VanDenbosh. David Zook was the first principal and E. L. Hallock, the superintendent. The school had only six teachers, two of whom were students in attendance. The first class graduated in 1878.

Our present Mishawaka High School was built by the Mishawaka Board of Education in 1924. It is a three story building on Lincoln Way East between Wenger and Gernhart Streets covering four square blocks including the track and football field. The auditorium and cafeteria were built after the main part of the high school was occupied. The auditorium was finished in 1925, just in time for the seniors to present their play, and the cafeteria was completed only a few weeks before the summer vacation. The original gym was remodeled in 1959 to accommodate two full-sized gymnasium floors and provide a total seating capacity of 4,000. An additional wing was added in 1963 providing nine classrooms, a reading laboratory, a foreign language laboratory, a music room, and a study hall. The grounds were carefully planned by landscape gardeners before the building was built. The present shrubbery in the foreground of the building was a joint effort in graduating classes and the student council contributions. The gold letters, Mishawaka High School, were put on the front of the building in 1931.

The building and equipping of Mishawaka High School originally cost \$800,000. The gym was remodeled in 1959 at a cost of approximately \$600,000. The classroom wing built in 1963 cost \$650,000. To construct and equip. The building and equipping of the stadium completed in 1939, cost approximately \$130,000. The Board of Control provided approximately \$55,000. toward in its construction and equipment. The Baldwin electric organ in the auditorium was given to the school in 1950 by the Lion's Club of Mishawaka, in memory of Mr. W. W. French. The entire school was rewired and fluorescent lighting added in 1953-1954 at a cost of \$125,000.

A four-year renovation project (1976-1980) has resulted in an extensive modernization of the indoor and outdoor facilities of the high school. Major areas of improvement included the auditorium, the cafeteria, the gymnasium, the library, the administrative offices, the industrial education wing, the hallways, the classrooms, and the stadium. The total cost of the project was just under four million dollars.

In 1984, another phase of the Mishawaka High School remodeling and expansion was completed. Newly constructed and located between the cafeteria and the Industrial Education Department is a two-story addition that houses the Music Department on the first floor and classrooms on the second. The kitchen and cafeteria facilities were expanded in order to provide food service to Beiger School and to improve service to our own high school students. The media center (library) was more than doubled in size and affords our students with increased opportunities for research and study.

In January, 1988, a new gym/pool complex was completed. Included in this facility are a wrestling room, a weight room, an all purpose room, and a 1/10th mile running track. The school district measures about five miles from east to west by three miles from north to south.

In fall of 1999 the science and technology wing was completed along with a new television studio., The new addition features eleven brand new science labs equipped with all the amenities necessary for conducting science class in the year 2000 and beyond.

The industrial technology portion of the facility houses a manufacturing lab where students learn about every fact imaginable in the world of manufacturing such as hydraulics, pneumatics, C-N-C lathes, and milling machines. Here students learn about designing a product and taking the product from the design stage to completion. The industrial technology wing also features a CAD (computer and design) lab where students are taught drafting skills with the aid of a computer. In the engineering lab the CAD course is taken to a higher level, and students learn to design buildings and community facilities. The communication lab works hand in hand with the artistic delivery of communication, which is housed in our television studio. We also have a transportation lab where students learn about transportation of people and things on land, air, water, and rail. Students are given an opportunity to interface with technologies, which are used to facilitate the respective modes of transportation. In the construction lab, students learn about each aspect of construction including foundations, framing, roof systems, and the materials used for various reasons such as climate and other purposes. The integrated lab melds all of the technologies from the other labs previously mentioned to give students an opportunity for exposure to all the different technologies. As a result of the new construction, Mishawaka High School now totals 319,949 square feet and sits on 16.36 acres.

Rewritten by:
Wendy Guerra
2004

THE HISTORY OF MISHAWAKA

Mishawaka, the Princess City, lies nestled along the meandering path of the St. Joseph River. The city is named after Princess Mishawaka, daughter of Shawnee Chief Elkhart. The legend of her romance with white trapper Dead shot, and abduction by her jealous Indian suitor Grey Wolf, characterizes the mixture of romance and history still found in Mishawaka today. The city's history began with the discovery of bog iron deposits in the early 1830's. Settlers arriving to mine these deposits founded the town of St. Joseph Iron Works in 1831. Within a couple years, the town had a blast furnace, a general store, a tavern, and about 200 residents. Business prospered, and in 1838, St. Joseph Iron Works and three other small towns nearby were incorporated into one— Mishawaka.

In September of 1872, a fire destroyed three quarters of Mishawaka's business district. However, the persevering citizens rebuilt and attracted new industry. The Dodge Manufacturing Company, Perkins Windmills and the Mishawaka Woolen and Rubber Company (later Ball Band then Uniroyal) all helped the town to prosper industrially. The town also grew agriculturally. In the late 1800's, the city gained the title as the "Peppermint Capital of the World" due to the rich black loam found in the area that yield great quantities of mint. Many European immigrants journeyed here spurred on by the promise of plentiful jobs. Belgians and Italians, along with smaller numbers of Hungarian, Greeks, Germans and Poles established separate neighborhoods, commercial areas and clubs. This European heritage remains a vital influence on present day Mishawaka.

Present day Mishawaka is a community on the go...and the grow. Massive commercial retail development areas within the northern end of the city has caused the Grape Road Commercial Corridor to become the second largest retail market in the state of Indiana. The Grape Road area not only provides for the commercial needs of Mishawaka residents but for residents in many of the north central Indiana and south central Michigan communities too. Although many of the large industrial users have since closed their doors, many smaller industrial facilities operate in the city's industrial parks producing a variety of products. The Edison Lakes Corporate Park, located along North Main Street, is the city's prime office area with several regional and national headquarters located within the corporate park area.

While the City has grown and expanded in the retail, office and industrial sectors, Mishawaka remains a great place to live and recreate. Old fashioned neighborhoods still exist all over the city where neighbors are willing to help each other with yard chores, share desert recipes or offer friendship. Many of the newer residential subdivisions that have been developed within the city in recent years have replicated the community spirit and "hometown" neighborhood feel. Because neighborhoods are such a vital resource to the success of Mishawaka, the city continually upgrades and develops new neighborhood park and recreation facilities. Presently, a total of 27 parks allow Mishawaka residents to golf, play ball, fish and exercise or enjoy some local historical attractions like the Battell Park Band Shelter or the Works Progress Administration Rock Garden.

With a rich history and a strong sense of that history, Mishawaka continues to prepare and grow for the future. New development within the Central Business District and the continual development and support of the city's commercial and industrial sectors guarantees the city's continued strength and success in the future. Princess Mishawaka was a strong warrior, an energetic athlete and a citizen committed to the betterment of her tribe and it is these characteristics that the city embodies and continues to make the Princess City the "Best Hometown in America."

THE HISTORY OF MISHAWAKA

Time Line

1679	First white man, LaSalle, arrived in area	1904	Simplex Motor Car Company was incorporated. In 1909, the name was changed to Amplex Motor Car Company. In 1911, two Amplex autos were entered into the first Indianapolis 500. One car crashed, killing its driver and causing the first race fatality, and the other car finished seventh and the driver won \$800.00.
1800	Indian wars involving the Shawnees, Potawatomi, and Ottawa Tribes; Princess Mishawaka involved in war	1928	World War I Memorial Band Shelter dedicated in Battell Park on Memorial Day
1820	Indian village Mish-a-wa-ka at the rapids	1930	Eberhart Golf Course opens. Petro Park added included into the golf course in 1949
1833	Saint Joseph Iron Works incorporated as a village	1947	Normain Heights, a subdivision for WW II veterans, begins development north of McKinley Avenue
1838	The Indiana General Assembly combines all four plats/villages under the name of MISHAWAKA (February 7)	1952	City's first Wastewater Treatment Plant (WWTP) begins operation, treating sewage before returning it to the river.
1839	First brewery opens. In 1887, becomes the Kamm & Schellinger Brewery	1972	Sister City Declaration with Shiojiri, Japan
1859	Great Mishawaka Train Wreck Thirty-two people were killed near the present day intersection of Ironwood and Lincoln Way West. (June 27)	1979	University Park Mall opens
1872	Mishawaka Fire. The fire destroyed forty-two buildings between First and Third Streets and Spring and Race Streets. (September 5)	1993	Main Street Bridge over I-80/90 opens connecting Main Street from downtown to State Road #23
1878	William and Wallace Dodge formed the "Magic Jack Company" which later evolved into the Dodge Mfg Company, a maker of power transmissions.	1987	Shiojiri Garden dedicated
1878	All-knit woolen boot created by Adolphus Eberhart and Martin Van Beiger causing the growth of the Mishawaka Woolen Company, which later became Ball Band.	1999	Mishawaka begins development of the Mishawaka River Center, the former site of the Uniroyal complex Mishawaka
1880	Battell Park given to the City by the Battell family. Battell Park is the city's oldest park.	2005	Robert C. Beutter Riverfront Park opens at River Center
1884	Civil War statue dedicated in Battell Park.		
1899	The village of Mishawaka votes to incorporate into a city; Manuel M. Fisher elected the first mayor (May 8)		
1903	Mishawaka Public Utilities Company organized		

MISHAWAKA

Then and Now



Mishawaka HS 1980



Mishawaka HS 2010
(side view)



1959 Post Office



2010 Post Office



Main Street Looking
North 1900's



Main Street Looking
North 2010



1980 Police Department



Police Department 2010



Library 1916



Library 2010



1986 Former City Hall



City Hall 2010



1905 Battell Park



2009 Battell Park



1950 Tivoli Theater



CVS 2010 (Tivoli torn down)



Fire Department 1940



Fire Department 2010
(Douglas Road)



Tribe 'O Rea
Drug Store



Bonnie Doon Sign
**Some things
Never Change**

Mishawaka Growth and Development Since 2005

Growth and development (www.mishawaka.in.gov)

A significant amount of quality development, redevelopment and investment is occurring in Mishawaka residential, commercial and industrial sectors. Although a significant portion of the new development centers in the "Golden Corridor" (Grape Road and Main Street), there is a distribution of developments in the central and east sides as well.

The Main Street Underpass, completed in 2010, received an Honor Award. Honor awards showcase the engineering achievements based on criteria, such as uniqueness and originality, technical complexity, social and economic value, and public awareness. The project was designed by DLZ Indiana, LLC. There are now five lanes of traffic with sidewalks and landscaping where cars used to back up waiting for trains on the Canadian National tracks to pass by. (Main Street between Jefferson and Broadway)



Commercial Growth

In 2004, a total of 267,504 square feet of commercial space was approved for construction. Included in that total are a number of chain restaurants, department stores and motels. Recognizing the opportunities and advantages associated with investing in Mishawaka, we have recently seen Home Depot, Extended Stay America, Logan's Roadhouse, Carrabba's, Hooters, Smokey Bones, Max & Erma's, Panera Bread, Houlihan's, and International House of Pancakes make significant investments in our city.

Edison Lakes Medical Center

Edison Lakes Medical Center, located on Day Road between Main Street and Edison Lakes Parkway, underwent major remodeling and expansion just last year. A 1,225 square foot building addition provided more operating rooms for the Ambulatory Surgery Center. The plans were then finalized in 2002 for the construction of a new 23,640 square foot Imaging Center on a 4-acre parcel of land acquired adjacent to the 10-acre site already owned by St. Joseph's Regional Medical Center. The success of this medical facility is noteworthy. Due to the new hospital in Edison Lakes, both St. Joseph Hospital in Mishawaka and South Bend have closed.



Downtown Growth

The closer we get to development of Mishawaka River Center, the more interest we see in downtown property. Evidence: the opening of the Phoenix Bar & Grill at the four-corners of Lincolnway and Main Street. Other restaurants have also shown interest in downtown. The city has an excellent reputation for interesting, friendly, quality, eating places such as The Phoenix, Maury's Pub, Main Street Grille, Doc Pierce's, Squad's, Sunny's, Papa Joe's and Reggio's.



Kamm Island

Kamm Island Park was added to the park system and opened to the public in June, 2004. This new development enhanced the park system as a whole by providing a quiet, natural, peaceful place in the midst of downtown Mishawaka. The new park includes open spaces, scenic overlooks of the St. Joseph River, a new section of the Mishawaka Riverwalk, and some prime fishing and picnic areas. The development of Kamm Island Park is an important piece of the redevelopment happening at the former Uniroyal site, at the 100 Center, and throughout the downtown area. Kamm Island Park also provides an important connection between the recreational areas in Lincoln Park and the Robert C. Beutter Riverfront Park, which opened in May, 2005.



The rebirth of Kamm Island began in 2003 with the cleaning, clearing, and construction of improvements on the island. After constructing vehicular and pedestrian bridges, reconstructing the original WPA wall, installing landscaping, and establishing an access/parking lot at the future Front Street, the island was opened for use as a city park. Every year, the Mishawaka Business Association showcases the new park with the annual Kamm Island Fest.

In spring 2005, the City built a temporary asphalt walkway from Beutter Park to Kamm Island. In addition, a permanent concrete walkway connecting the Central Park bridge to Beutter Park was constructed. These two additions greatly increased the immediate usability of the Riverwalk and park system. The increased use, based on the immediate completion of the infrastructure, also assists in the marketability of the River Center properties.



Mishawaka Top News Stories Since 2005

Dec. 13, 2004 to Nov. 1, 2008: On Dec. 13, 2003, Mishawaka Cpl. Tom Roberts, 43, and Patrolman Bryan Verkler, 27, went to a house on Sarah Street to question Raymond Gilkeson, 30, about a stolen necklace. Gilkeson shot both officers and later himself. All three died.

On April 23, 2006, South Bend Cpl. Scott Severns, who was off duty, was shot protecting a female friend from an attempted robbery. Jeffrey Finley, the gunman, was sentenced to 65 years in prison and Mijell Redding, who drove the car, to 30 years in prison. On April 24, 2007, South Bend Cpl. Nick Polizzotto was shot while responding to a call at the Wooden Indian Motel on Lincoln Way East. Patrolman Michael Norby was shot in the shoulder during the call but was able to fire at the gunman, Scott Barnaby, killing him.

July 21, 2006: Seventeen years after his father, stepmother and two stepsisters were found shot to death in their rural Lakeville home, Jeffrey Pelley was found guilty by a St. Joseph Superior Court jury of the four murders. Pelley, who was a teenager at the time of the April 1989 crime, has always maintained his innocence. He is serving a 160-year prison sentence.

Feb. 2, 2007: Daniel J. Sharp and Randy Lee Reeder were arrested and charged with the murders of four homeless men -- Michael "Shan" Nolen Jr., 40; Michael Lawson, 53; Jason Coates, 29; and Brian G. Talboom, 51 -- whose bodies were found in manholes just south of downtown South Bend.

The suspects reportedly believed the four victims had stolen metal scrap items they had saved to sell. Sharp pleaded guilty and is serving a 65-year prison term. Reeder was convicted at trial and sentenced to four 65-year prison terms.

March 6, 2007: Federal agents arrested 36 employees at Janco Composites in Mishawaka, the first local immigration raid for several years. It's among many raids across the country that year. It's also the biggest local raid of the decade.

Aug. 2, 2007: Thirteen years after voting to pursue one, the Dowagiac-based Pokagon Band of Potawatomi Indians finally succeeded in opening a more than \$400 million casino east of New Buffalo. The Four Winds Casino has been highly successful, taking in close to \$1 million per day. Some of the funding supports programs created by tribal government, benefiting many of the 3,200 tribal members who live in the area.

Oct. 18, 2007: An F3 tornado, with winds in excess of 136 mph, touched down in Nappanee, destroying homes and businesses and causing millions of dollars in damage. Amazingly, no one was killed. Nearly 5,000 volunteers arrived in the small town to help with cleanup efforts.

Jan. 25, 2008: Monaco Coach laid off 200 employees at its Wakarusa plant, starting massive layoffs in the Elkhart County recreational vehicle industry that resulted in nearly 19 percent unemployment rate for the county by March 2009. Some of the companies have started rehiring, dropping the unemployment rate to 14.5 percent by November 2009.

Mishawaka Top News Stories ***Since 2005 (cont.)***

A goodbye that was 45 years in the making June 2008: Demolition began on the last major phase of removal of buildings that originally housed the Studebaker Corp., the automaker that ceased production in South Bend in 1963. Removal of the massive vacant factory buildings along Sample Street makes way for Ignition Park, a "landing site" for new businesses to be developed in Innovation Park, a new research park near Notre Dame. The former Oliver Chilled Plow Works on Chapin Street was demolished and cleared in 2002 to make way for the Oliver Industrial Park.

April 9, 2008: Democratic presidential candidate Barack Obama attends a packed late-night rally at South Bend's Washington High School. Later, as the Democratic nominee, Obama leads a town hall meeting at Elkhart's Concord High School. Obama returns and speaks again at Concord High School on Feb. 9, 2009, in one of his first public appearances after becoming president.

Nov. 16, 2008: WSBT-TV broadcasts the first live newscast from its new station on Douglas Road. That made it the first of two institutions that moved from downtown South Bend to northeast Mishawaka during the decade. Patients on Dec. 14, 2009, were moved to the new Saint Joseph Regional Medical Center, within sight of the new television station.

March 2009: Washington High School basketball superstar Skylar Diggins was named Naismith National Player of the Year and Gatorade National Player of the Year, adding to her list of honors. She led her high school team to the state championship in 2007 and now is attending and playing for Notre Dame.

Obama's ND visit a lightning rod May 17, 2009: After months of controversy and protests by anti-abortion activists, President Barack Obama gave the commencement address and received an honorary degree at Notre Dame. The Rev. John I. Jenkins, Notre Dame's president, came under fire from many who thought Obama should not have been honored by the Catholic university because of his support for abortion rights and embryonic stem cell research.

Sept. 22, 2009: News broke that the College Football Hall of Fame is leaving South Bend for Atlanta. The Hall of Fame opened in South Bend in 1995. Although it was promoted as a tourist attraction and economic driver, corporate sponsors didn't materialize and attendance has never reached what was expected. The city's current contract runs through 2010. City leaders are exploring future uses for the hall building.

Dec. 11, 2009: Brian Kelly, former coach at the University of Cincinnati, was introduced as the new head football coach at Notre Dame. That made Kelly the fourth Irish head coach during this decade, which has been a disappointing span for fans. Notre Dame has fired three head coaches this decade because of lackluster records: Bob Davie in 2001, Tyrone Willingham in 2004 and Charlie Weis on Nov. 30, 2009. In 2001, Notre Dame hired George O'Leary as the new football coach, but he quickly resigned after inaccuracies on his résumé came to light.

Michiana Growth and Development Since 2005

REMEMBER SCOTTSDALE MALL????

In 1980 Ayr-Way chain closed upon its sale to the Dayton-Hudson changing the name to Target. By 2003, only a handful or so of stores were left in the mall, along with Target and a popular movie theatre.

Unfortunately this was not enough to keep the mall afloat, and it was sold, closed, and promptly torn down in 2004; only Target was to remain at the site.



Scottsdale Mall: 1980



Erskine Plaza: 2010

EDDY STREET COMMONS

(Across from Notre Dame)

The South Bend Metro Area has over 22,000 college students in seven major colleges and universities. These include Bethel College, Davenport University, Holy Cross College, Indiana University South Bend, Ivy Tech College South Bend, Saint Mary's College and University of Notre Dame.

Over half of these students are within close proximity to Eddy Street Commons. Notre Dame itself has an enrollment of 12,000 students, while Holy Cross College and Saint Mary's College have enrollments of 500 students and 1,500 students, respectively. In total, Eddy Street has roughly 14,000 students within 1-2 miles of the project, most within walking distance.



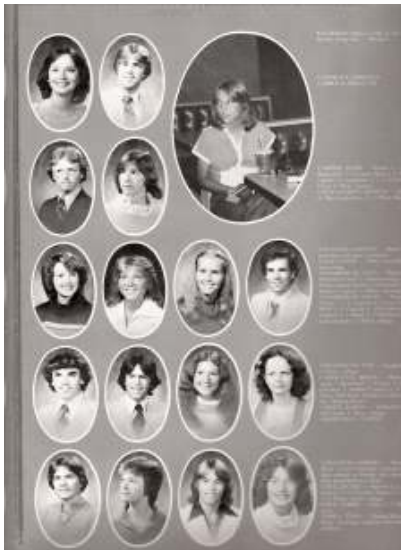
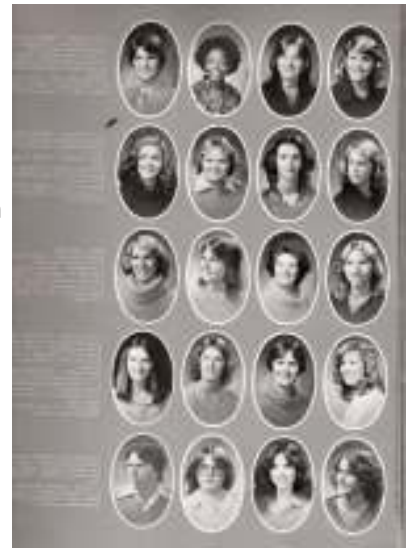
Senior Pictures



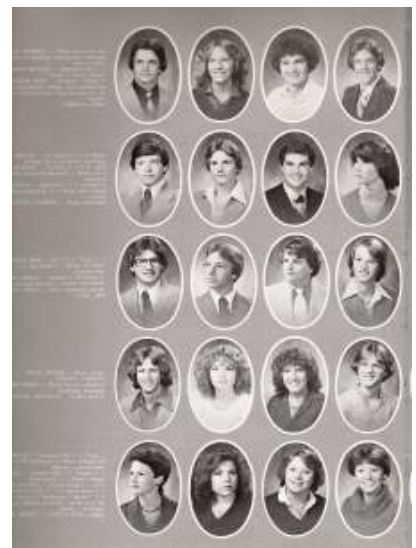
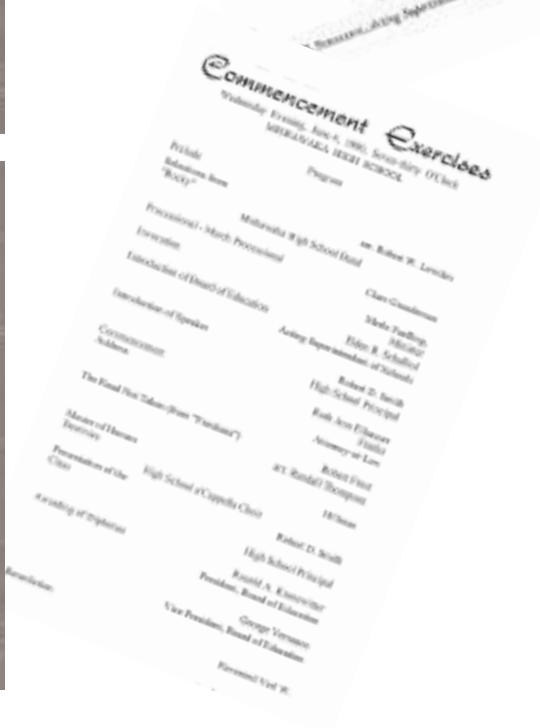
Senior Class Officers

Joseph Gleissner **Pamela Kosanovich**
 President Secretary

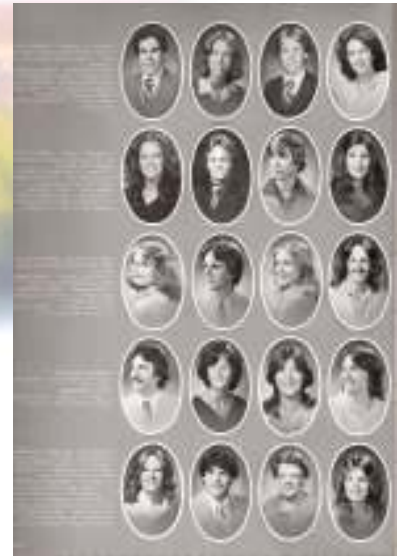
David Hansen **Kristine Rogers**
 Vice-President Treasurer



Senior Pictures



Senior Pictures



GRADUATES

Updated Information

GARY ABUSAMRA

MELANIE HARTMAN
FRANCESCA GRACE, SOPHIA MARIE
5071 TERRITORIAL RD
GRAND BLANC, MI 48439 (248) 841-1644
GARYABUSAMRA@COMCAST.NET Facebook: N

BOB ALLISON

7422 KANKAKEE RD
WALKERTON, IN 46574 (574) 586-3271
Facebook: N

LAURIE ANKROM ANKROM

210 HAWTHORNE DR
SOUTH BEND, IN 46617 (574) 232-1427
Facebook: N

PAM HINTON ARMISTEAD

P O BOX 652
NORTH LIBERTY, IN 46554
wulflady43@yahoo.com Facebook: N

BRIAN ASCHENBRENNER

CATHY
HEATHER, MICHELLE, JOANNA
416 N WHITLOCK ST
BREMEN, IN 46506 (574) 546-5398
BASCHE21@HOTMAIL.COM Facebook: Y

JIM ATKINSON

847 E 3rd ST
MISHAWAKA, IN 46544
Facebook: N

HOPE KUSS AUERBACH

WILLIAM
EMILY, MARY
21 RYE RIDGE PARKWAY
WEST HARTFORD, CT 06117 (960) 236-4134
HOPE@SOFTTOOLS.COM Facebook: Y

SCOTT AUSTIN

805 DALE AV
MISHAWAKA, IN 46544
Facebook: N

BILL BABCOCK

124 ORANGE AVE
MISHAWAKA, IN 46544 (574) 258-4995
DALESR37@YAHOO.COM Facebook: N

JUDY STRANTZ BAIZ

59000 CLOVER RD
MISHAWAKA, IN 46544
Facebook: N

ANITA WALLS BAKER

1410 BURNHAM DR.
MISHAWAKA, IN 46544
Facebook: N

MONICA BRAZEAU BALLEW

RICK
ZADA, EVA
8319 W 3 MILE RD
FRANKSVILLE, WI 531269684 (262) 835-4133
MBALLEW@NEO-BRAKE.COM Facebook: N

DAN BALLMER

TRACY
LINDSAY
6912 PINE BARK LANE
COLUMBUS, OH 43235
dballmer@sbcglobal.net Facebook: Y

RONALD BALMER

50628 WEEPING WILLOW RUN EAST
GRANGER, IN 46530
Facebook: N

TAMMY STARKWEATHER BARCUS

JAMES
SEAN, BRANDON
547 W 4TH STREET
MISHAWAKA, IN 46544 (574) 272-7836
JBARCUS104@AOL.COM Facebook: N

DONITA CATANZARITE BARNHART

JIM
ADAM, CATE, JOE
1529 BENNINGTON DR
MISHAWAKA, IN 46544 (574) 255-5147
DONITA0129@EARTHLINK.NET Facebook: Y

LISA BRENNEMAN BASKER

CHRIS
JARED
19040 DRESDEN DR
SOUTH BEND, IN 46637 (574) 277-7245
LID0@AOL.COM Facebook: N

GRADUATES

BRENDA LANE BATCHELOR

602 E. BROADWAY AVE
MISHAWAKA, IN 46545 (574) 259-4482
Facebook: N

SHELLY PERSHING BATES

THOMAS
17515 BRANDEL AVE
GRANGER, IN 46530 (574) 271-1851
shellybates45@sbcglobal.net Facebook: N

KAREN CHRIST BECKER

16550 CHANDLER BLVD
MISHAWAKA, IN 46544
Facebook: N

JEANNE SCHLARB BEERS

JEFFREY
JARED
13585 DRAGOON TRAIL
MISHAWAKA, IN 46544 (574) 256-9612
jbeers90@hotmail.com Facebook: Y

MEG MEANS BERGERSON

BILL
1704 E 131st ST
KANSAS CITY, MO 64146 (816) 941-8278
MARGARET.MEANS@QUINTILES.COM Facebook: Y

PAM WORKMAN BERNAT

412 PARKVIEW TERRACE E.
ALGONQUIN, IL 60102
pamela.bernat@cbexchange.com Facebook: N

JULIE CORYN BERRY

REED, JASON, RYAN, COREY
4603 TERRA LN
ST JOSEPH, MI 49085
JBERRYF5@COMCAST.NET Facebook: N

BETH MCGANN BEYKE

ROBERT
JILLIAN, RACHEL
5713 WINDWARD COURT
INDIANAPOLIS, IN 46278 (317) 299-5278
beyindy@sbcglobal.net Facebook: Y

SCOTT BIANCHINI

420 W. MARKET ST.
WARSAW, IN 46580
Facebook: Y

JOHN BICE

208 BASTOGNE ST
MISHAWAKA, IN 46545
DYNAMITEDAD88@YAHOO.COM Facebook: Y

VINCE BILANCIO

YOKO SUENAGA
529 W GROVE #1
MISHAWAKA, IN 46545 (818) 424-5047
vincentjp@hotmail.com Facebook: Y

JOHN BLACK

3825 FERN HILL DR
MISHAWAKA, IN 46544 (574) 259-4302
Facebook: N

GRANT BLIMLING

JULIE
11557 S. WOLFE BRIDGE DR
GRANGER, IN 46530
jblimling@egh.org Facebook: N

JULIE PORTER BLIMLING

GRANT
11557 S. WOLFE BRIDGE DR
GRANGER, IN 46530
jblimling@egh.org Facebook: N

TERRI HARSHMAN BLYE

RONALD
JEFFREY, JACOB, JENNIFER
5019 HEATHER LN
SOUTH BEND, IN 46614
BLYES@JUNO.COM Facebook: N

JULIE WERBROUCK BODLE

KEITH
TONY, LAUREN
11941 PRICE ST
OSCELOA, IN 46561 (574) 679-9149
Facebook: N

BOB BOEHNLEIN

DENISE
LUKE, TARA
14182 WARBLER WAY
CARMEL, IN 46033 (317) 843-2307
rboehnlein@indy.rr.com Facebook: Y

GRADUATES

SHEILA MITCHELL BOEHLIEN

ALLEN
2710369
GRANGER, IN 46530
Facebook: N

AMY SPEARS BONNER

STEVE
ANTHONY
151 J.D. NEIL RD.
TULLAHOMA, TN 37388 (615) 455-8237
Facebook: N

PATTY RANSBERGER BOOMHOWER

118 E. LAWRENCE ST.
MISHAWAKA, IN 46545
Facebook: N

AMY SCHOTT BOSTEDT

JAMIE, ERIK
143 CHIMNEY TOP DR
ANTIOCH, TN 37013 (615) 397-0246
abostedt@hotmail.com Facebook: Y

PATTY KOBB BOULWARE

1845 SAUNDERS AVE
SAINT PAUL, MN 55116
pjboulware@comcast.com Facebook: N

STACIE BOWMAN BOWMAN

C/O LaSalle SCHOOL.1511 Milburn Blvd
MISHAWAKA, IN 46545
campbells@mishawaka.k12.in.us Facebook: N

PAULA DOLLGENER- BREITENBACH

544 PARKVIEW TERR
BUFFALO GROVE, IL 60089
Facebook: N

MARSHALL BRODY

2983 PRINCETON DR
MISHAWAKA, IN 46544
Facebook: N

DAVID BRUNNER

110 W CHESTNUT #3
JOHNSON CITY, TN 37604
Facebook: N

JIM BUTCHKO

202 CHAMBERLIN ST
IRVING, TX 75060
Facebook: N

PAM GABY CAMPBELL

SCOTT
TARA, DAVID, GRANDCHILDREN 2
728 S 36th ST
SOUTH BEND, IN 46615 (574) 233-2982
SCOTT.CAMPBELL1@COMCAST.NET Facebook: N

JULIE EGGLESTON CARNEY

MARK
JACK, NICK
19468 BLUE OAK CT
NOBLESVILLE, IN 46060 (317) 774-1007
MJCARNEY@INSIGHTBB.COM Facebook: Y

MARK CARTER

KATHARINE
MATTHEW, BENJAMIN
40 PARADISE CT
LAFAYETTE, IN 47905
k105mark@yahoo.com Facebook: Y

STEVE CHAMBERLIN

CAROLYN
ELLEN, GWENN, STEVE (STEPCHILDREN) ALISSA, SPENCER
1215 BRANDYWINE LANE
BROOKFIELD, WI 53045
stevec@chamberlingroup.net Facebook: N

PAM HAGGIN CHAPMAN

C/O BARB HAGGIN
1915 HAVEN CT
MISHAWAKA, IN 46545
Facebook: N

TIM CHENOWETH

509 BALLARD AVE
MISHAWAKA, IN 46544 (574) 254-1447
Facebook: N

BRIAN CHOQUETTE

CANDICE, TABITHA, BRIANNA
3763 SERENITY PARKWAY
KANKAKEE, IL 60901
BJCHOQUETTE@YAHOO.COM Facebook: Y

GRADUATES

DORINDA CARMEAN CHRISTMAN

2209 MILBURN BLVD
MISHAWAKA, IN 46544
dorinda@smart-4.com Facebook: Y

DEBBIE CHUDZICKI

1521 E. IRELAND RD
SOUTH BEND, IN 46614
shedragon@cablone.net Facebook: Y

SHAUN BURKHARDT CLANTON

7068 CANDICE DR
CAMBY, IN 46113
Facebook: N

MARGARET NAGY CLEVELAND

STEPHEN
ZINAIDA-1
2809 N. 925 East
MILL CREEK, IN 46365
MCLEVELAND99@AOL.COM Facebook: Y

LORI LUNDGREN COEN

9680 W NORTHERN AVE #2201
PEORIA, AZ 85345
neocl61@aol.com Facebook: Y

JIM COLE

503 E 3rd ST
MISHAWAKA, IN 46544
Facebook: N

DAVE COLLIER

30880 OSBORNE RD
NORTH LIBERTY, IN 465549102
colliertrucking@earthlink.net Facebook: N

DENISE MICHAELIS COON

JEFF
AUSTIN
625 HUMMINGBIRD LN.
WHITELAND, IN 46184
Facebook: N

LAUREL EBERHART COPPENS

JOHN
430 MIAMI CLUB DR
MISHAWAKA, IN 46544 (574) 255-6066
Facebook: N

KERRY BLAKE CULVER

945 S LOGAN
MISHAWAKA, IN 46545 (574) 234-5948
Facebook: N

STACEY YEATER DALE

JERRY
115 MANOR DR.
MISHAWAKA, IN 46544
Facebook: Y

KIM SEARVOGLE DANIELS

911 S 15TH ST
NILES, MI 49120
kimrothfuchs@yahoo.com Facebook: Y

BETH SHAW DANLEY

KEVIN
BROOKE JOSHUA
1009 W 7TH ST
MISHAWAKA, IN 46544
bethda@bigclumber.com Facebook: Y

SCOTT DARR

58431 DOWNEY AV
MISHAWAKA, IN 46544
Facebook: N

BETH ERWIN DAVIS

BRENT
DAMON, SHELBY, SHAYNA, LUKE
919 HANDLEBAR RD
MISHAWAKA, IN 46544 (574) 258-0399
Facebook: N

DIANE TEETER DAWSON

1441 F ST
WOODBIDGE, VA 22191
Facebook: Y

GARY DE BECK

805 E IRVINGTON AV
SOUTH BEND, IN 46614
unclebob61@excite.com Facebook: N

JOHN DE CLOEDT

30835 MAST DR
OSCEOLA, IN 46561
Facebook: N

GRADUATES

CYNDI SRIVER DEMARCO

DON
MAGGIE, EMILY
29 WHITEWOOD RD
NEWTOWN, CT 06470 (203) 426-7983
newtownjeweler@aol.com Facebook: Y

STEVE DENMAN

742 S 35TH ST
SOUTH BEND, IN 46615
docpierces@sbcglobal.net Facebook: N

JAN GRONNING DESIMONE

GINO
ANDREW, ANGELA, ANNA
11605 CATLIN BRIDGE CT
GRANGER, IN 46530 (574) 277-6107
g5381@aol.com Facebook: N

GEORGE DEWALD

409 CALHOUN ST
MISHAWAKA, IN 46545 (574) 256-7345
Facebook: N

JEFF DIAL

600 E 3RD ST
MISHAWAKA, IN 46544
Facebook: N

ELAINE BROCKIE DIEDRICH

Todd Keller
2 children
1065 W North Shore
Chicago, IL 60626 (574) 993-0117
laineymad1@yahoo.com Facebook: Y

STACY BLANFORD DIGMAN

BRIAN
GREGORY (ROBBIE), SAMUAL
10017 RIVER RAPIDS RUN
FORT WAYNE, IN 46845 (260) 456-4576
Facebook: Y

TIM DILL

11383 IDLEWOOD
OSCEOLA, IN 46561
Facebook: N

PAULETTE NEMETH DOAN

705 W. BROADWAY
MISHAWAKA, IN 46545
Facebook: N

MARY FOWLER DURAGO

7702 SUNBLEST
FISHERS, IN 46038
Facebook: N

KATHY SCHOEN EAKINS

363 S. 900 E.
AKRON, IN 46910
Facebook: N

DAWN YERKES EDWARDS

TIM
20765 Chadwick Lane
Brookfield, WI 53045
Facebook: N

KAREN JONES ERICKSON

JONATHAN, CHELSEY, GRANDCHILD 1
51032 FORESTBROOK DR.
SOUTH BEND, IN 46637 (574) 273-3977
ERICKSON284@HOTMAIL.COM Facebook: N

CAROL VERBEKE ERNE

7941 WHITE PINE DR
AVON, IN 46123
Facebook: Y

VALERIE KLINE ESSEX

TRACY
RACHEL, TANNER, TYLER, TIMMY, EMILY, S'MARA
639 HWY 25 NORTH
GUY, AR 72061 (501) 679-3163
Facebook: N

DANA BORDNER FALL

JESSICA, KAILEY
2115 MAPLEHURST AVE
MISHAWAKA, IN 46545 (574) 255-0264
jadedbutterfly62@sbcglobal.net Facebook: Y

KEITH FINCHUM

56030 JEFFERSON KNOLLS DR.
OSCEOLA, IN 46561
Facebook: N

SCOTT FISHER

3302 MILLSTONE DRIVE
SUMMERFIELD, NC 273508 (336) 207-2578
ScottFisher13@hotmail.com Facebook: Y

GRADUATES

DIANE SCHAFFER FLATT

2815 LEXINGTON
MISHAWAKA, IN 46544 (574) 255-2055
Facebook: N

GAIL FOZO FORD

KEN
RICHARD, NICHOLAS, ARIEL, GRANDCHILDREN 3
415 N WENGER ST
MISHAWAKA, IN 46544 (574) 256-2769
gailmford@aol.com Facebook: Y

KEN FORD

GAIL
RICHARD, NICHOLAS, ARIEL, GRANDCHILDREN 3
415 N WENGER ST
MISHAWAKA, IN 46544 (574) 256-2769
KENRFORD@AOL.COM Facebook: Y

JOHN FORSLUND

CANDACE
SHANE, EVAN, ERIC, IAN, SETH, LEAN
3817 STREAMVIEW CT
MISHAWAKA, IN 46544 (574) 257-8790
johnthec2@yahoo.com Facebook: Y

DIANA FOWLER

819 Reddick St
MISHAWAKA, IN 46544 (574) 259-4889
DSFOWLER61@YAHOO.COM Facebook: Y

LISA PEYLA FRANTZ

DANIEL, PATRICK
505 CALHOUN ST
MISHAWAKA, IN 46545
efrantz@sbcsc.k12.in.us Facebook: Y

JULIE HOLIDAY FREITAG

808 S SPRING ST
MISHAWAKA, IN 46544
Facebook: Y

SHARON BEERS FREITAG

105 SESAME ST
SPRINGBOARD, OH 45066
Facebook: N

CARRI WEBBER FRYE

DEE
1335 PROSPECT DR
MISHAWAKA, IN 46544 (574) 255-4593
Facebook: N

RICK GANSER

152200 COVERED WAGON TR
GRANGER, IN 46530 (574) 292-6544
Facebook: N

TOM GARRARD

24787 E 51st ST
BROKEN ARROW, OK 74014
Facebook: N

LISA RZEPNICKI GARTEE

DAVE
DAVID, ANTHONY
417 N BYRKIT
MISHAWAKA, IN 46545 (574) 259-5007
lgartee@comcast.net Facebook: N

TOM GERARD

SUE
SARAH
609 W BATTELL ST
MISHAWAKA, IN 46545 (574) 256-1235
tomegerard@comcast.net Facebook: Y

GARY GERVAIS

CHASE MADISON
119 MANCHESTER DR.
MISHAWAKA, IN 46544 (574) 255-4572
Facebook: N

VICKI SHEARER GILLILAND

BRENT
7910 E 620 S
WOLCOTTVILLE, IN 46795
Musicvic@embarqmail.com Facebook: Y

JOE GLEISSNER

7008 BLUFFWOOD CT
BROWNSBURG, IN 46612
Facebook: Y

GINA CHAMBERLIN GOMES

JOE
ALEC, JOEY
3914 SPRINGBROOK DR
SOUTH BEND, IN 46614 (574) 231-9537
joegina@mindspring.com Facebook: Y

CHERYL PENN GOOD

504 LOWELL AVE
MISHAWAKA, IN 46545 (574) 258-4995
Facebook: Y

GRADUATES

KAREN FURORE GRAU

LARRY
ALEXA, CHANDLER
5237 ARABIAN RUN
INDIANAPOLIS, IN 46228 (317) 293-7653
KARENGRAU@AOL.COM Facebook: Y

BILL GRAVES

GINA
602 S. Main St. Ste. A, PMB 491
CRESTVIEW, FL 32536
billgraves1@gmail.com Facebook: N

MARY LOU SCHEETZ GRIERSON

MATT
STEVE, ALLI
70521 M62 SOUTH
EDWARDSBURG, MI 49112
meggrierson@comcast.net Facebook: N

JIM GRISE

TAMMY HEAPS
2412 MILBURN BLVD
MISHAWAKA, IN 46544 (574) 259-0352
bears20127@yahoo.com Facebook: N

BRETT GROH

MARY
8010 RIDGEGATE EAST DRIVE
INDIANAPOLIS, IN 462681826 (317) 471-9421
mnmgroh@att.net Facebook: N

CHERYL GROOM

818 CARLTON ST
MISHAWAKA, IN 46544 (574) 258-4834
Facebook: N

DEL GUDMUNDSON

MARY
CHRISTIAN; ELIJAH
2209 MARINA DRIVE
WASHINGTON, MO 63090 (636) 432-1344
deltechy@charter.net Facebook: Y

DEBBIE JURGENSON GUNDRUM

DEVAN, DANELLE, DESIREE, DANIEL
106 E RUPEL/PO BOX 675
NORTH LIBERTY, IN 46554 (574) 656-3154
DAYRAY43@AOL.COM Facebook: Y

KAREN GENTRY HALE

1750 COREY DR
BREMEN, IN 46506
tako80180@embarqmail.com Facebook: N

BOB HALL

1625 LYNN ST
MISHAWAKA, IN 46545 (574) 259-1496
Facebook: N

MARGIE GOELLER HALL

JOHN
JOSHUA, SARAH, ZACHARIAH, NOAH
4311 ANCHOR DR
MISHAWAKA, IN 46544 (574) 258-9663
margiehall4@gmail.com Facebook: Y

BOB HAMMAN

2421 KORN ST
NILES, MI 49120
Facebook: N

DAVE HANSEN

15199 CLEVELAND RD
GRANGER, IN 46530 (574) 277-2545
Facebook: N

SHERYL WISE HANSEN

24179 CR 126
GOSHEN, IN 46526 (574) 875-1279
Facebook: Y

SUSAN HANSON

C/O REV. CARLTON D. HANSON
7000 WILHELMINA DR.
MIDDLETOWN, OH 45044
Facebook: N

CINDY RILEY HARPER

4033 GAMBLE RD
INDIANAPOLIS, IN 46221
Facebook: Y

BECKY CAIN HARTSTEIN

ANDREW, AMANDA
10807 BUNKER HILL DRIVE
CARMEL, IN 46032 (317) 873-9165
reb.hart@sbcglobal.net Facebook: N

GRADUATES

MICHELLE BEHNKE HATFIELD

ROBERT

NICOLE, PHIL, DREW

4330 WINDING BROOK RD

FORT WAYNE, IN 46814 (260) 466-7999

michelle_hatfield@ceandf.com Facebook: Y

MIKE HAUN

AMY

MEISHA, MADISON, BRADY

14223 WORTHINGTON DR

GRANGER, IN 46530 (574) 247-0369

mikey219@comcast.net Facebook: Y

MIKE HELMAN

2489 FLINT COURT

SOUTH BEND, IN 46628

mrhelman23@yahoo.com Facebook: N

CHRISTINE HENKER HENKER

MATT, ALYSSA

916 HARVARD DRIVE

SUN PRAIRIE, WI 53590 (608) 576-9257

chenker80@gmail.com Facebook: N

LEE HENNINGS

54720 29th ST

SOUTH BEND, IN 46635 (574) 243-0579

Facebook: N

MARK HIGGINS

APRIL

BEN, GRANDCHILD 1

1352 N. LAKESHORE DR

KEWANNA, IN 46939 (574) 721-8112

HIGGINS@RTCOL.COM Facebook: N

KELLY DUNCAN HILL

HARRY

7806 CHATTERLEY CT

ORLANDO, FL 32835

indykhill@hotmail.com Facebook: N

CARLA BUTTS HINTON

JEFF

4 DAUGHTERS, GRANDCHILDREN 10

504 BEHNEY AV

MISHAWAKA, IN 46544 (574) 855-2361

cdhintonrn@yahoo.com Facebook: Y

ROGER HINTZ

DIANE

KENDA

7287 HARDIN OAK DRIVE

NOBLESVILLE, IN 46060 (317) 523-2619

RIHINTZ@AOL.COM Facebook: Y

AMY RIFENBERG HITCHMOUGH

8902 E. 550 S.

INDIANAPOLIS, IN 46231

lady_burleigh_designs@yahoo.com Facebook: Y

PAUL HODAPP

JOSHUA

304 S DILLINGHAM AVE, APT B

KISSIMEE, FL 34741 (407) 227 1395

hodapp7p@netscape.net Facebook: N

EILEEN CRIST HORVATH

JOE

JOE, JOSH, ALICIA

62441 ORANGE RD

SOUTH BEND, IN 46614 (574) 282-1009

EHORVATH41@AOL.COM Facebook: Y

GREG HUNT

103 HICKORY

WALKERTON, IN 46574

Facebook: N

MARK INGRAM

KIM

PATRICK, EMILY

13387 ANDERSON RD

GRANGER, IN 46530 (574) 243-5896

MAINGRAM@MINDSPRING.COM Facebook: N

KATHY KASE INGRAM

MICHAEL

ANTHONY, TAYLOR

8 DOLPHIN POINT DR

BEAUFORT, SC 29902 (843) 524-8533

kkingram@comcast.net Facebook: Y

TAMMY TEEGARDEN JARVIS

JIM

ALEXANDRA, MACKENZIE, NATHANIEL

55136 JEFFERY DR

MISHAWAKA, IN 46545 (574) 258-4249

Facebook: N

GRADUATES

TIM JESTER

204 E COLFAX AV
MISHAWAKA, IN 46545 (574) 255-8294
Facebook: N

AMY JOHNSON

51690 WINDING WATERS LANE N
ELKHART, IN 46514 (574) 266-1270
abjohnson62@att.net Facebook: Y

BRENDA McCLISH JOHNSON

64070 State Road 331
SOUTH BEND, IN 46614
johonsb@SJPMC.com Facebook: N

TOM JONES

SUSAN
53180 POPPY RD
SOUTH BEND, IN 46628 (574) 234-0009
Facebook: N

BRIAN JONES

2113 S IRONWOOD DR
SOUTH BEND, IN 46613 (574) 520-1921
BDJ0982@YAHOO.COM Facebook: Y

DEANNA JUDAY

57511 KLINE ST
MISHAWAKA, IN 46544
Facebook: N

PAMELA GEYER KEMP

JOSEPH
OLIVIA ROSE
5465 HOMESTEAD CT
PLACERVILLE, CA 95667
kempmam@gmail.com Facebook: Y

BECKY PETTY KENT

BRIAN
JACQUE, JOSH
307 BILLINGS PLACE
HUNTERSVILLE, NC 208078
kent5342@bellsouth.net Facebook: Y

JEAN NELSON KEPPLER

JON
8356 N 50TH DRIVE
GLENDALE, AZ 85302 (623) 332-7741
jeankepler@cox.net Facebook: Y

CAROL EDWARDS KILGORE

52722 FARMINGDALE DR.
GRANGER, IN 46530
carkil3@yahoo.com Facebook: Y

DENISE FRYE KIMMEL

DENNY
HEATHER, MALLORY, ELIZABETH
719 E 6th ST
MISHAWAKA, IN 46544 (574) 259-8034
ddhmek5@aol.com Facebook: Y

BRENT KING

64803 SR 23
NORTH LIBERTY, IN 46554
Facebook: N

LISA DODSON KLINE

2104 EASTWOOD CIRCLE
MISHAWAKA, IN 46545 (574) 256-7370
lkauffman@lesea.com Facebook: N

DAVID KLUMP

55902 SHORT HAIR DR
OSCEOLA, IN 46561 (574) 675-9317
Facebook: N

SHARLENE KOBBS

115 W BROADWAY AV
MISHAWAKA, IN 46545 (574) 274-9049
auntishar1961@yahoo.com Facebook: Y

MINDY MORENO KOECKE

5563 BIRCH RD
OSCEOLA, IN 46561 (574) 674-8045
Facebook: N

PAM KOSANOVICH

SANDPOINT, ID
pkosanovich@thecreek.com Facebook: Y

LINDA FISHER KOWALINSKI

552 DITTMAN ST
MISHAWAKA, IN 46544
Facebook: Y

GRADUATES

KATHY PHILLIPS KRANER

ANDY

CHRISTOPHER, JUSTIN, GRANDCHILDREN 2
12326 CARLTON DR.
MISHAWAKA, IN 46545 (574) 257-1976
KKRANER@COMCAST.NET Facebook: Y

MARY KRILLENBERGER

601 MIDDLEBORO ST
MISHAWAKA, IN 46544
Facebook: N

STEVE KRONEWITTER

BRIDGIT

KLYLE, CHAD, CORY
3326 DEER LAKE DR
SOUTH BEND, IN 46614 UNLISTED
SDKFINCL@AOL.COM Facebook: Y

KURT KRUEGER

901 N MAIN ST
MISHAWAKA, IN 46545
Facebook: N

WENDY NICKISON KRUEGER

TIM

JORDAN
9218 N. 53RD PL
PARADISE VALLEY, AZ 85253 (480) 905-1833
TAWK@COX.NET Facebook: N

SUZANNE KYLE

347 BROOK ST
MISHAWAKA, IN 46544
suzannekyle6028@yahoo.com Facebook: N

LISA(MARIE) TAGLIFERRI LARES

BRIAN

BRIAN III, BENJAMIN, ELLIOTT
52404 OAK MANOR DR
GRANGER, IN 46530 (574) 387-4123
ELLBIBEN@AOL.COM Facebook: Y

MICHELLE GALE LAVENGOOD

15923 IRELAND RD
MISHAWAKA, IN 46544
mdgale22@yahoo.com Facebook: Y

TAMMY OUSLEY LAWSON

CLIFF

MIKE, LINDSEY, ASHLEY, GRANDCHILD 1
26755 STATE ROAD 2
SOUTH BEND, IN 46619 (574) 234-3867
tamlawson62@gmail.com Facebook: Y

DAVIE LEE

2409 LWE
MISHAWAKA, IN 46544
Facebook: N

LINDA DAGGY LEISENRING

ROBERT

MATHEW, MARC (STEPSONS)
716 E WILBUR AVE
DALTON GARDENS, ID 83815 (208) 772-6848
LINDA_DAGGY@HOTMAIL.COM Facebook: Y

TAMI BRECHTEL LEMAK

1531 E 3RD ST
MISHAWAKA, IN 46544 (574) 220-6737
Facebook: Y

DAVE LENISKI

2669 HAMPTON RD
MISHAWAKA, IN 46544 (584) 258-0802
Facebook: N

DIANE LEYES

532 W. MARION ST.
MISHAWAKA, IN 46545 (574) 259-5082
Facebook: N

STEVE LINK

JUDY

MEGAN, MONICA
125 ALFORD ST
MISHAWAKA, IN 46544 (574) 255-9561
sirmrtow@yahoo.com Facebook: Y

SHARON MERIBELA- LONG

318 W 10th ST
MISHAWAKA, IN 46544
sldesigns314@sbcglobal.net Facebook: N

JACKIE COLE LOVE

KRISTEN; AARON

500 WHISPERWOOD DR
GREENEVILLE, TN 37743 (423) 638-1212
love.jackielove@gmail.com. Facebook: N

GRADUATES

SAM LOVELACE

WANDA

JASON, JOSHUA, GRANDCHILD 1
714 JAMAICA DR
TROY, MI 48083 (248) 585-1351
swlovelace@inbox.com Facebook: Y

CHRIS LaCAVA

245 SW 105TH TERRACE
PORTLAND, OR 97225 (503) 443-5887
cllacava@hotmail.com Facebook: Y

JAN MABIE

BETH SYVERSON

JOE (BETH'S SON)

13421 CURTIS AND KING ROAD
NORWALK, CA 90650 (562) 833-7349
JANSELECTRICAL@GMAIL.COM Facebook: Y

SUE MITTLEMAN MALCOM

JOE

MELISSA, REBECCA

313 E 8th ST
RUSHVILLE, IN 46173 (765) 932-4324
Facebook: N

PAT MANUEL

19686 YODER ST.
SOUTH BEND, IN 46614 (574) 291-0547
Facebook: N

MIKE MARCHI

1315 BEACON CT
MISHAWAKA, IN 46544 (574) 259-0836
Facebook: Y

MARK MARSHALL

JACKIE

STEPHANIE, BENJAMIN
3727 VISTULA RD
MISHAWAKA, IN 46544 (574) 259-9475
MJSB4@AOL.COM Facebook: Y

BILLY MARTIN

145 N. FALCON ST.
SOUTH BEND, IN 46619
Facebook: N

DENNIS MARTIN

815 W DOUGLAS RD, LOT 71
MISHAWAKA, IN 46545
Facebook: N

KRISTI WOLFE MASON

LINDSEY, BRENNAN, AUBREE, KEANAN, GRANDCHILD 1
1246 BRITTANY ROAD
MEMPHIS, TN 38127 (901) 210-3899
ETCKAM@AOL.COM Facebook: Y

LORRAINE MATHENEY

542 W. 8TH ST
MISHAWAKA, IN 46545
Facebook: N

BARB SHIPP MATHERLY

205 E. 8TH ST
MISHAWAKA, IN 46544
Facebook: N

PEG PROBST MAUPIN

DON

4705 A. BULL CREEK
AUSTIN, TX 78731 (512) 323-6166
pegmaupin@gmail.com Facebook: Y

GINA MCDONALD

319 GEORGE ST
MISHAWAKA, IN 46544
jjmac501b@sbcglobal.net Facebook: Y

BOB MELTON

17380 IRELAND
SOUTH BEND, IN 46614 (574) 291-9477
Facebook: N

SUE MICHEL

BOB KULAWIEC

ADAM, CLAIRE

6005 28 th STR NW
WASHINGTON, DC 20015 (202) 363-1423
smichel@starpower.net Facebook: Y

CHUCK MICHELS

1952 BRIAR WAY
SOUTH BEND, IN 46614 (574) 315-8795
Chuckmichels@hotmail.com Facebook: N

JOHN MICHELS

4207 WOODVALE DR
SOUTH BEND, IN 46614
Facebook: N

GRADUATES

GLENNA CAVANAH MILLER

56859 MAYFLOWER RD
SOUTH BEND, IN 46619
tuniemoose@aol.com Facebook: Y

STEPHANIE MILLER

1838 HUEY ST
SOUTH BEND, IN 46628
Facebook: N

JANE HOFFMAN MILLER

GREG
202 GERNHART AV
MISHAWAKA, IN 46544 (574) 256-2788
JMARGROC@YAHOO.COM Facebook: N

MARIA BOGAN MITCHELL

JOSHUA, SHAWN
110 MONROE STREET
INDIANAPOLIS, IN 46629 (317) 894-0135
marlmitchell07@yahoo.com Facebook: N

PAM MIZE MIZE

TONY, MARK, SARAH
1421 PHEASANTRUN
MISHAWAKA, IN 46544 (574) 256-2460
Facebook: N

PAUL MODLIN

PATRICE
JACOB, ALEX
64651 CEDAR RD
WAKARUSA, IN 46573 (574) 633-0038
MODLINP@MISHAWAKA.K12.IN.US Facebook: N

DEBBIE MOFFETT

SON
1526 Orchard Park N Dr
INDIANAPOLIS, IN 46280
debcrosby99@gmail.com Facebook: N

KEN MOORE

KELLY
PRESTON, KYLE, BRITTANY
110 FLOUNDER ST
MOYOCK, NC 27958 (757) 412-7511
ON CLASSMATES WEBSITE Facebook: Y

KRISTINE ROGERS MOORE

DALE
RYAN, STEPHEN
5336 HEATHROW AVE
KALAMAZOO, MI 49009 (269) 544-2482
DMOORECRNA@ATT.NET Facebook: Y

LISA MOORE

214 DRAGOON TR
MISHAWAKA, IN 46544
Facebook: N

JACK MORGAN

305 COLUMBIA ST
MISHAWAKA, IN 46544
Facebook: N

JANN VERHEYE MORRIS

814 W. LAWRENCE ST
MISHAWAKA, IN 46545
Facebook: N

MARY PIERCE MORRIS

GERALD
CANDICE, BRANDON
15115 SW 142ND PL
MIAMI, FL 33186 (786) 581-9077
mpierce61@yahoo.com Facebook: Y

DON MOW

54535 BUCKEYE RD
OSCEOLA, IN 46561 (574) 674-2652
Facebook: N

AMY ROBINSON MUSARY

MIKE
MICHAEL, MATTHEW
2712 CEDAR KEY DRIVE
LAKE ORION, MI 48360 (248) 391-3923
MUSARY@AOL.COM Facebook: N

DAVE MYERS

55865 SKYHAWK LAKE DR
MARCELLUS, MI
Facebook: N

WINONA FUELLING MCGINNIS

AMBER, STACY, KATIE, JOSHUA
5806 YELLOW WOOD DRIVE
SOUTH BEND, IN 46614 (574) 299-8451
winsomewinona@easydoesit.com Facebook: Y

GRADUATES

LINDA McHONE McHONE

234 1/2 E GROVE ST
MISHAWAKA, IN 46544
Facebook: N

SEAN McINERNEY

MARY
PATRICK
5650 SHUTTLE CREEK RD
UNIONVILLE, IN 47468 (812) 331-6765
SEAN47401@YAHOO.COM Facebook: N

GARY McLEOD

5673 CR. 325 N
BUTLERVILLE, IN 47223
Facebook: N

KATHY LECHTANSKI McQUAID

DAVID
2713 S. 13TH ST
NILES, IN 49120 (269) 684-4332
Facebook: N

CLAY NASH

54240 28th ST
SOUTH BEND, IN 46635 (574) 277-4668
Facebook: N

KEVIN NATVIG

53308 PORTAGE RD
SOUTH BEND, IN 46628
Facebook: N

LYNNE KEDIK NESS

JOE
JOE, TYLER, MONIKA
2626 USHER ST
LOGANSPOUT, IN 46947 (219) 722-6266
ness2626@comcast.net Facebook: N

BOB NICHOLS

3504 EASTMONT DR
SOUTH BEND, IN 46628
Facebook: N

JEN HAMMAN NIJAK

SAL
REBECCA, KATHERYN
5949 YORK RD
SOUTH BEND, IN 46614 (574) 291-1311
mhs80@live.com Facebook: Y

KEVIN O'DELL

JEREMY, STEVEN, KEVIN II, KATHERINE, HALLIE
3445 YELLOW BANK ROAD
DUNKIRK, MD 20754
KSODELLOO@YAHOO.COM Facebook: Y

SEAN O'SHEA

JENNIFER
COREY, ERIN, CAITLIN, SHANNON
2229 DUCK HOLLOW DR
KENNESAW, GA 30144
teamoshea@aol.com Facebook: N

DON OBLINGER

1314 E. BENNETT AVE
MOUNT PLEASANT, MI 48858
dkoblinger@gmail.com Facebook: N

RANDY OLENA

LISA
51144 NORTH SHORE DR
ELKHART, IN 46514
RLOLENA@VERIZON.NET Facebook: Y

JULIE HARTSOUGH OLINGER

TIM
LARA, HANNAH
11949 E. 200 S.
LA OTTO, IN 46763 (260) 897-9899
DOCTIMFAM@AOL.COM Facebook: N

LAURIE NICHOLS ORTON

BOB
ALEXANDRA, ADAM
10318 ELYS FORD ROAD
FREDERICKSBURG, VA 22407 (804) 332-2926
LAURIEN4321@COMCAST.COM Facebook: Y

ROBERT PAMACHENA

JOANN
BENJAMIN
402 MIAMI CLUB DRIVE
MISHAWAKA, IN 46544 (574) 255-6834
RJPAMACHENA@MSN.COM Facebook: N

DOUG PATTERSON

DONNETTE
JOEL, JOSH, EMILY, AUSTIN
10067 SHADOW WOOD DR.
GRANGER, IN 46530 (574) 675-9114
DDPATTERSON83@COMCAST.NET Facebook: Y

GRADUATES

MIKE PATTERSON

BRENDA
58451 BEEHLER RD
OSCEOLA, IN 46561 (574) 674-5572
Facebook: Y

JIM PAUL

914 W. BATTELL
MISHAWAKA, IN 46545
Facebook: N

SHERRIE TURNER PEDEN

JENNIFER, MICHAEL
12754 VICKI LN
GRANGER, IN 46530 (574) 243-2874
SHERRIE823@AOL.COM Facebook: N

HEIDI STEINHAUER PEEBLES

PAUL
ERICA, EMILY, ELLIOTT, SEAN, SHANE
409 E 3RD ST.
MISHAWAKA, IN 46545 (574) 259-0152
pepchoc@yahoo.com Facebook: Y

KEVIN PEEK

202 HARRISON ST.
MISHAWAKA, IN 46544 (574) 255-2605
Facebook: N

MELODY TORRENCE PENISH

BILL
1134 FAIRFAX CT
GREENWOOD, IN 46143 (317) 888-0032
melodyandbill@att.net Facebook: Y

MARI PENROSE

3412 VISTULA RD
MISHAWAKA, IN 46544
Facebook: N

KAREN ULLERY PERSHING

RODNEY
KEITH
52438 OAK MANOR DRIVE
GRANGER, IN 46530 (574) 674-5512
Facebook: Y

PEGGY BRADLEY PIERCE

601 N MASON ST
MISHAWAKA, IN 46544
Facebook: N

LORI ARNETT POLSTON

MARK
58579 BAUGO CROSSING
ELKHART, IN 46517 (574) 522-4669
Facebook: N

ROGER POWELL

DEBRA DEAL
BLAIR, BLAKE, JACKSON
54747 WINDING BROOK
MISHAWAKA, IN 46545 (574) 259-4716
rp7639@yahoo.com Facebook: Y

LAURA BOTTORFF PRESTON

ANTHONY, ALEXANDRA
3220 RAVINE DRIVE
ST JOSEPH, MI 49085 (269) 408-8061
chimpssis@aol.com Facebook: N

MICHELE FRIEDMAN PRICE

3934 N HEATHERHILL DR
BARTLETT, TN 38134
onelmichele@bellsouth.net Facebook: Y

KAREN MAGGIOLI RADDE

JOHN
ANTHONY, KYLE
1518 SHELTON DR
MISHAWAKA, IN 46544 UNLISTED
Facebook: Y

JOHN RANSBERGER

LAURA
CHRISTINE, MASON
58828 ELM ROAD
MISHAWAKA, IN 46544 (574) 259-1503
YANCHIBATCHI@GMAIL.COM Facebook: Y

RANDY RANSCHAERT

PATRICK, DANIEL
1005 THREE RIVERS
FT WAYNE, IN 46802
rranschaert@hotmail.com Facebook: Y

SHELLIE VAN HOECKE READ

DAVID
8473 6TH RD E
PLYMOUTH, IN 46563 (574) 936-7189
Facebook: N

GRADUATES

JEFF REGINA

SHELLEY
KELSEY, PAIGE
1123 BENNINGTON DR
MISHAWAKA, IN 46544 (574) 256-0337
Facebook: Y

SHELLEY CURTIS REGINA

JEFF
KELSEY, PAIGE
1123 BENNINGTON DR
MISHAWAKA, IN 46544 (574) 256-0337
Shelley.Regina@btlaw.com Facebook: Y

MARIA GERMANO RHODA

PATRICK
DANNY, GORDON
8702 DRIFTWOOD DR
INDIANAPOLIS, IN 46240 (317) 569-9628
mgrhoda@sbcglobal.net Facebook: N

STEVE RICE

520 FARNEHAM DR
SOUTH BEND, IN 46614
Facebook: N

GRETCHEN BRUNER RICH

JOSEPH
JOHN, PAUL
1236 PINE ST
GLENVIEW, IL 60025 (847) 729-7006
GRETCHEN.RICH@GMAIL.COM Facebook: N

MIKE RICHARDSON

1663 N. RIVERSIDE, APT C
SOUTH BEND, IN 46615
Facebook: Y

ROB RIDDLE

ANGIE
JAMIE, MATTHEW, BRANDLEY, BEVERLY, GRANDCHILDREN 4
12534 GLEN OAK LANE EAST
GRANGER, IN 46530 (574) 807-1057
NONE Facebook: N

RICH RIFFEL

KYLE
3502 PLEASANT ST.
SOUTH BEND, IN 46615
rickriffel@att.net Facebook: Y

JOHN RINGHOFFER

US 12, BOX 331
EDWARDSBURG, MI 49112
Facebook: N

KIM BOEHNLEIN RITTENHOUSE

PETER
RYAN, NICHOLAS, MICHAEL, PETER
1610 FIELDSTONE AVE
ALLENTOWN, PA 18106
rittenkp@aol.com Facebook: Y

LISA HOLDREN ROBERTSON

JEFFREY
MADISON NOEL
201 W 9th ST
MISHAWAKA, IN 46544 (574) 258-4241
R1781@AOL.COM Facebook: N

BECKY JACKSON RONCONI

822 SOMERSET AV
MISHAWAKA, IN 46544 (574) 256-2290
Facebook: N

TRACY RUSS RUSS

1312 LAWNSDALE ST
NILES, MI 49120
Facebook: N

DENNIS RYAN

KRISTI
COLE, ALEXA, MARISSA
13841 LEXINGTON CIRCLE N
GRANGER, IN 46530 (574) 532-2071
dennis.ryan100@gmail.com Facebook: Y

LORI SARKISIAN

1624 SOUTHBROOK DR
SOUTH BEND, IN 46614
Facebook: Y

GARY SCHAAL

820 W. MARION AVE
MISHAWAKA, IN 46545 (574) 387-4543
Facebook: N

BETH BRUCE SCHNEIDER

RICHARD
LEAH, KYLE, LUKE
52130 EVARD DR
GRANGER, IN 46530 (574) 273-8665
ELIZABETH.SCHNEIDER@ND.EDU Facebook: N

GRADUATES

JAMIE TOBOLSKI SCHROEDER

JOHN

JACK, KATIE, JOSEPH

7808 ISLAY RD

INDIANAPOLIS, IN 46217 (317) 887-0181

JJKJSCHRO@NETZERO.COM Facebook: N

BECKY CAMPAGNA SCHULTZ

FREDRIC

13870 LEXINGTON CR. N.

GRANGER, IN 46530

no email Facebook: N

TOM SCHULTZ

JEAN

JOSEPH, KYLE, CAROLINE

1496 BROOK MILL CT.

CARMEL, IN 46032 (317) 574-1406

TSCHULTZ@SCHULTZPOGUELAW.COM Facebook: Y

HANS SCOTT

109 1/2 SOUTH MAIN ST

3RD FLOOR

MISHAWAKA, IN 46544 (574) 993-0445

crazyknitter@hotmail.com Facebook: N

RICH SEARER

AMY

ASHLEY, KATIE, SARAH

18089 COURTLAND EAST

SOUTH BEND, IN 46637 (574) 273-0676

rsearer@sbcscck12.in.us Facebook: N

DEBBIE DAVIS SEEVER

JENNIFER, JEFFERY GRANDCHILDREN 2

6815 LEGACY PARK DR APT#101

BROWNSBURG, IN 46112 (317) 777-0373

debbie10620@sbcglobal.net Facebook: Y

JUDY SEGGERMAN

207 W BATTELL

MISHAWAKA, IN 46545 (574) 258-4162

JLS62662@hotmail.com Facebook: Y

JOSETTE HECKAMAN SHANNON

115 W BATTELL ST

MISHAWAKA, IN 46545

Facebook: Y

TERRI SHARP

734 1/2 E. 3RD ST

MISHAWAKA, IN 46544

TINA SHARP

132 E. LAWRENCE

MISHAWAKA, IN 46545

Facebook: N

CHRISTINE STOPPER SHEAKS

DAVE

RYAN, AIMEE

226 WILLIAMS ST

NORTH LIBERTY, IN 46554 (219) 656-8388

Facebook: Y

GARY SHEAKS

69123 GATEWAY DR.

APT A-1

EDWARDSBURG, MI 49112

Facebook: N

JOHN SHEDD

JEANNE

ESTON; TEAGAN

7 WALNUT ST.

LAKEWOOD, NY 14750 (716) 763-6842

jshedd@rwlarsonarchitects.com or jshedd@windstream.net

Facebook: Y

ANNE RUPPE SHIELDS

BRIAN

VANESSA

12417 HORTON

OVERLAND PARK, KS 66209 (913) 345-0532

ARSHIELDS@AOL.COM Facebook: Y

BRENDA ROUNDS SIGO

42247 DIVISION RD

WEST LAFAYETTE, IN 47906

Facebook: N

DIANE BRECHTEL SMITH

N. KENT

ERICA, NOLAN

12704 NORFOLK LN

CARMEL, IN 46032 (317) 581-1870

SMITH12704@AOL.COM Facebook: Y

JULIE VAN DEN DREISSCHE SMITH

MIKE

NIKKI, KATELYN

6760 HALL RD

PLAINFIELD, IN 46168 (317) 837-8964

JMSmith953@sbcglobal.net Facebook: Y

GRADUATES

CHIRS SNEDDON

7363 FRUIT COVE FOREST W
JACKSONVILLE, FL 32259
Facebook: N

TERRY SNYDER

HEAHTER, MELISSA, GRANDCHILDREN 5
1380 TWILIGHT DR
NOBLESVILLE, IN 46060
tlsnyder18200@hotmail.com Facebook: Y

JULIE WISE SOMMER

MARK
SUZANNE, MARK, MATTHER, RACHEL
53828 Sunwood Dr.
GRANGER, IN 46530
julieannsommer@gmail.com Facebook: Y

DEAN SOWERS

614 S. MAIN ST.
MISHAWAKA, IN 46544
Facebook: N

KAREN BANNER SPARKS

9498 E 250 S
PIERCETON, IN 46562
Facebook: Y

PATTI LAIRAMORE SPEARS

SPENCER
VICTORIA
804 VIOLET CIRCLE
NAPERVILLE, IL 60540 (630) 358-5525
pattilynnspears@msn.com Facebook: Y

JULIE BROCKWAY- SPRY

56440 FRANCIS ST
MISHAWAKA, IN 46544
Facebook: N

ADELE KAMERER STABNIK

KEVIN
MARSHALL
52872 HAUSMAN ST
SOUTH BEND, IN 46637 (574) 271-8438
delsa61@att.net Facebook: Y

PATTIE SKODINSKI STAMM

BRETT
AMANDA, PATRICK, MICHEL
1438 LINCOLN WAY EAST
MISHAWAKA, IN 46544 (574) 255-5693
bsps5@sbcglobal.net Facebook: Y

LORI CURTIS STANAGE

WILLIAM
515 GRAND BLVD
MISHAWAKA, IN 46544 (574) 259-4140
Facebook: N

JOHN STANISCI

33587 AUTEN RD
NEW CARLISLE, IN 46552
gstanisci@aol.com Facebook: Y

ANGEE STAFFORD STAPP

JOSEPH
KYLE
617 N MASON
MISHAWAKA, IN 46544 (574) 254-7302
stappa@mishawaka.k12.in.us Facebook: N

MARK STEIN

SHARON ALBERT
ISAIAH; ELIJAH
2103 W LIVINGSTON
ALLEN TOWN, PA 18104 (610) 776-0390
STEIN@MUHLENBERG.EDU Facebook: Y

MARY LOU STAPLES STEVENS

SCOTT
MITCHELL
617 LINCOLNWAY WEST
MISHAWAKA, IN 46544 (574) 259-5887
marylou.stevens@townear.com Facebook: N

TIM STEWART

TERRI
KATY, JENNIFER, AND JONATHAN
POBOX 324
NORTH LIBERTY, IN 46554 (219) 656-4958
tim.stewart@nlccnet.org Facebook: N

MARK STULL

SUSAN
PAYTON, CARSON
8302 LINVILLE OAKS DRIVE
OAK RIDGE, NC 27310
MSTULL@LIBERTYHARDWARE.COM Facebook: N

LINDA RUNNELS/VAN ARSDALE SUBRAMANIAN

MANNY
GAIL, MARLA, KELLY
106 WHEELER LANE
FREDERICK, MD 21702 (301) 698-2794
mishawakan@comcast.net Facebook: Y

GRADUATES

SUE ENYEART SWARTZ

TOM
JESSICA, JACLYN
33305 APPLE LN
SHELBY TOWNSHIP, MI 48310 (810) 795-0214
swartzmom@hotmail.com Facebook: Y

JOHN Taelman

3431 CONCORD CT.
MISHAWAKA, IN 46545
Facebook: N

LORIE TAKACH TAKACH

DALTON, NICOLE
1115 OAKLAND ST
SOUTH BEND, IN 46615 (574) 289-6424
Facebook: N

MICHAEL TALBOT

JACKIE
TONY, BRYCE
10940 PEWAMO DR
OSCEOLA, IN 46561 (574) 674-6960
MBOT44@EXCITE.COM Facebook: N

CHRIS ROTHY TAVERNIER

CARY
BRITTNEY, CORY
908 BERKLEY CIRCLE
MISHAWAKA, IN 46544 (574) 259-0840
chrissytee@att.net Facebook: Y

BETH THOMAN TAVITAS

ANTHONY
NATHAN, CHRISTANN, CATHERINE
1614 SEA BREEZE CT.
MUNSTER, IN 46321 (219) 924-6696
tavitef1@yahoo.com Facebook: Y

ROBERT J THIELKING

ELIZABETH
ALEXANDER, LELA
19523 SUNWARD CT.
GOSHEN, IN 46528 (574) 875-9155
Facebook: N

TURA COREY THOMPSON

BRENT
PATRICK, ADAM, SAMUEL, MANDI
504 FULTON AVE.
ROCHESTER, IN 46975 (219) 223-5516
THOMPSON@RTCOL.COM Facebook: Y

TRUDY WAUMANS THORNBURG

541 W 13th Street
MISHAWAKA, IN 46544
tthornburg@c21jd.com Facebook: Y

STEVE TINDALL

223 GUAM AVE.
MISHAWAKA, IN 46545 (574) 855-3236
Facebook: N

JOHN TORDI

MARCIA
ALEX; ANDREA
2309 CEDARWOOD WAY
FORT WAYNE, IN 46804 (260) 466-0368
JMTORDI@AOL.COM Facebook: Y

DENISE TRAVERS

105 W COLFAX AVE
MISHAWAKA, IN 46545
Facebook: N

LINDA MUSZYNSKI TREMP

3207 E BRISTOL AV
ELKHART, IN 46514
Facebook: N

PETER TRIMBOLI

MARY
STEPHEN, KEVIN
12277 SILVERSPUR CT
GRANGER, IN 46530 (574) 273-8436
mrtrimboli@comcast.net Facebook: N

MARY SNIDER TRIMBOLI

PETER
STEPHEN, KEVIN
12277 SILVERSPUR CT
GRANGER, IN 46530 (574) 273-8436
mrtrimboli@comcast.net Facebook: Y

KARIN URSCHEL

KADE AARON
113 W 16TH ST
MISHAWAKA, IN 46544 (574) 254-1452
Facebook: N

BARB VALENTINE

4206 FOXFIRE DRIVE
SOUTH BEND, IN 46628 (574) 254-7302
Barbscooby850488@yahoo.com Facebook: Y

GRADUATES

DEBBIE SELNER VERMEULEN

10421 APPLETREE LN
OSCEOLA, IN 46561
Facebook: N

CINDY VERNASCO

12208 JUDSON RD
SILVER SPRING, MD 20902 (301) 962-7509
CINDY@WRSWORLD.COM Facebook: N

TARA DUENSING VERUCHI

RICHARD
ROBERT, KRISTINA
2723 SIOUX CT
ROCKFORD, IL 61109 (815) 218-1464
tigertj13@aol.com Facebook: Y

KRISTE ROWE VRIELYNCK

715 E. ALTGELD ST
SOUTH BEND, IN 46614
Facebook: N

ROBERT WALLACE

ANNETTE
BRANDON, BLAKE
203 RIVERBY FARM RD
EDENTON, NC 27932 (252) 482-8650
Facebook: N

DAVE WALTER

51190 WHITEWATER LN
SOUTH BEND, IN 46628
davewalter393@att.net Facebook: Y

BOB WALTZ

TAMMY
PAYTON, SHANE
5223 GARAND DRIVE
WESTERVILLE, OH 43081 (614) 557-4914
rlwaltz@insight.rr.com Facebook: N

CINDY CAVE WARD

MARK
ASHLEY, AUBRIE, ALICIA
1314 BEACON CT
MISHAWAKA, IN 46544 (574) 256-5350
Facebook: N

MIKE WARD

NANCY
113 WHEAT FIELD CT
BLUFFTON, SC 29910
mrward10@hotmail.com Facebook: Y

MARIE WILHELM WASKA

PO BOX 1702
BETHEL, AK 99559
Facebook: N

LANCE WATKINS

1602 HOMEWOOD AVE.
MISHAWAKA, IN 46544
Facebook: N

DANIEL WEAVER

SANDRA
DANIEL
1825 E 4TH ST
MISHAWAKA, IN 46544 (574) 255-1061
ddweaver6977@att.net Facebook: Y

TOM WEINKAUF

DIANA
ADAM, KAYLEY, STEPHEN, KELSEY
29860 C. R. 24
ELKHART, IN 46517 (574) 523-1507
TOMW@daman.COM Facebook: Y

DAVE WELTER

2511 E 5TH
MISHAWAKA, IN 46545 (574) 577-9415
davewalter393@att.net Facebook: N

JON WEST

SUZANNE
LAURELLE, DEXTER
401 STUDEBAKER
MISHAWAKA, IN 46544 (574) 256-0314
musicteach001@hotmail.com Facebook: Y

SUZANNE DE LAURELLE WEST

JON
LAURELLE; DEXTER
401 STUDEBAKER ST
MISHAWAKA, IN 46544 (574) 256-0314
SUZ9162@HOTMAIL.COM Facebook: Y

GRADUATES

CINDY WHITE

ALEXANDRA
1880 BROOKVIEW DR
BROWNSBURG, IN 46112 (317) 852-2450
CMWHITE@STVINCENT.ORG Facebook: N

JOY WHITE

139 PETERS LANE
HAMPTON, TN 37658 (423) 725-2377
wjaysings@aol.com Facebook: Y

CARLA LARKINS WHITMER

12519 GLEN OAK LN
GRANGER, IN 46530
Facebook: N

RANDY WHITT

1007 RIVERSIDE DR.
LAGRANGE, GA 30240
Facebook: N

ALAN WIGENT

DAWN
SAMANTHA, SAMONE, RODGER
906 E WALNUT
NAPPANEE, IN 46550 (574) 773-3588
bear6288@yahoo.com Facebook: Y

DAN WILCOX

382 RINEHART ROAD
CHILLICOTHE, OH 45601 (740) 851-9979
gutpilepro@horizonview.net Facebook: N

TONY WILSON

KIM
AARON
815 Vistula Road
Osceola, IN 46561 (574) 282-1520
kimberlyfw@aol.com Facebook: N

ADAM WIRICK

C/O JOY WIRICK
57810 S. APPLE RD
OSCEOLA, IN 46561
Facebook: N

BECKY SCHWEPLER WOJCIK

GREG
ZACK, COOPER, JAKE, FRANCESCA
3790 N. CR 575 E
BROWNSBURG, IN 46112 (317) 858-0564
GBWOJ6@AOL.COM Facebook: N

BRENT WOODWORTH

PSC#2
APO AP, IN 96264 KOREA
Facebook: N

KEVIN WOODY

725 W. MARION ST.
MISHAWAKA, IN 46545
Facebook: Y

VICKI FOX YARBROUGH

SAM, ADAM
224 SOUTHWIND LN
GREEWOOD, IN 46142 (317) 340-4949
foxyarbrough@yahoo.com Facebook: Y

BRIAN ZANOTTI

RACHEL, MACKENZIE
BEDFORD, VA
zanottibrian@yahoo.com Facebook: Y

JOE ZAPPIA

ANDREA
1015 W. LAWRENCE ST
MISHAWAKA, IN 46545 (574) 259-3135
Facebook: Y

DAN ZEHRING

AMY
ASHLEY, JOSHUA
2018 E AMBER LN
GILBERT, AZ 85296 (480) 503-9553
sportsfan4@cox.net Facebook: Y

DAVE ZEHRING

ALYSE, DAVID, GRANDCHILDREN 3
1182 E SHANNON
GILBERT, AZ 85296 (480) 782-8498
DJZEHRING@COX.NET Facebook: Y

GINGER VERVYNCHT ZELLMER

1115 DOGWOOD RD
BREMEN, IN 46506
Facebook: N

TERI SATTERLEE ZIMMERMAN

18 MERCIER WAY
GORHAM, ME 04038
Facebook: N

CLASSMATES RESIDENTIAL STATISTICS

Granger	25
Elkhart	5
Indianapolis (area)	16
Mishawaka	124
Osceola	13
South Bend	43
Remainder of Indiana	50
Indiana Total	276
Alaska	1
Arizona	5
Arkansas	1
California	2
Connecticut	2
Distict of Columbia	1
Florida	5
Georgia	2
Idaho	2
Illinois	7
Kansas	1
Maine	1
Maryland	3
Michigan	16
Minnesota	1
Missouri	2
New York	1
North Carolina	5
Ohio	5
Oklahoma	1
Oregon	1
Pennsylvania	2
South Carolina	2
Tennessee	7
Texas	2
Virginia	3
Wisconsin	4
Outside IN	85

399 Total Classmates

23 Missing or unsure address Classmates

15 Deceased Classmates

MHS Senior Year 9/79 to 12/80

National & World News

President James Earl Carter, Jr.
Vice President Walter F. Mondale

FACTS:

- 2/2** A U.S. senator from New Jersey, a representative from PA, accused of accepting bribes
- 2/13** 13th Winter Olympics open in Lake Placid, NY
- 3/27** Mount St. Helens in the state of Washington erupts for the first time since 1857.
- 6/1** Cable News Network (CNN) goes in the air (Ted Turner)
- 6/23** Sanjay Gandhi, son of India's Prime Minister Indira Gandhi, dies in a plane crash.
- 6/27** President Jimmy Carter signs a measure that requires four million American males, ages 19 and 20, register for the draft.
- 6/27** The Canadian House of Commons officially adopts "Oh, Canada" as the national anthem.
- 7/14** President Carter's brother Billy becomes a registered foreign agent of the Libyan government after receiving a \$220,000 "loan" from the Libyans. Two weeks later the president admits having given Billy classified information dealing with Libya.
- 8/31** Hurricane David hits the Dominican Republic, killing more than 600 people, leaving 150,000 homeless, and causing \$1 billion in damage.
- 11/4** Republican Ronald Reagan wins the American presidency, defeating Democratic incumbent Jimmy Carter.
- 11/12** The Voyager I passes close to Saturn during her 3-year, 1.3 billion mile journey, making new discoveries regarding the planet's moons and rings.
- 11/19** The Brooke Shields "Nothing comes between me and my Calvins" jeans ad is banned by CBS.
- 11/21** A fire in the MGM Grand Hotel in Las Vegas claims the lives of 84 people. Helicopters lift more than one thousand guests to safety from the rooftop. The hotel had no smoke alarms.
- 11/23** An earthquake in southern Italy claims thousands of lives.
- 12/8** Mark David Chapman shoots and kills John Lennon outside New York City's Dakota apartment building.
- 12/9** Bill Gates Licenses MS-DOS

A 1980 study by UCLA and [American Council on Education](#) indicated that college freshmen were more interested in status, power, and money than at any time during the past 15 years. Business Management was the most popular major

CARS

#1 Car – 1980

Chrysler Imperial 2-door sedan had a V-8 engine. Currently sells for \$1200-\$4000, with the upper end being the cars with all power accessories and leather seats. There was a "Frank Sinatra" edition that is collectible. In 1980, AMC introduced America's first SUV, the Eagle; Renault acquired a 25% interest in the company and sold their Fuego sports car and LeCar through AMC dealerships.

Other Transportation: mopeds

Popular Dance: Disco

LIFE EXPECTANCY – 73.7 Years

US POPULATION - 227,224,681

MISHAWAKA POPULATION – 40,201



MHS Senior Year 9/79 to 12/80

National & World News

ENTERTAINMENT

Books

FICTION

1. The Covenant, James A. Michener
2. The Bourne Identity, Robert Ludlum
3. Rage of Angels, Sidney Sheldon
4. Princess Daisy, Judith Krantz
5. Firestarter, Stephen King

NONFICTION

1. Crisis Investing..., D.R. Casey
2. Cosmos, Carl Sagan
3. Free to Choose, Milton & Rose Friedman
4. Anatomy of an Illness. Norman Cousins
5. Thy Neighbor's Wife, Gay Talese

Academy Award

Best Picture: Kramer vs. Kramer

MOVIES

Raging Bull	Ordinary People
The Shining	Superman
Airplane	Caddyshack
The Empire Strikes Back	

MUSIC

Record of the Year:

What a Fool Believes, Doobie Brothers

Album of the Year: 52nd Street, Billy Joel (Columbia)

Song of the Year: What a Fool Believes

TOP HITS

9 to 5
Against the Wind
Another One Bites the Dust
Crazy Little Thing Called Love
It's Still Rock and Roll to Me
Empire Strikes Back Medley
I Don't Want to Walk Without You
Lost In Love
Xanadu

TELEVISION HITS

Dallas – Who shot JR?	Charlies Angels
Mash	Happy Days
Eight is Enough	Taxi
Barney Miller	Hill Street Blues

CELEBRITY DEATHS

Alfred Hitchcock	John Lennon
Jesse Owens	Mae West
William Douglas	Erich Fromm

MHS Senior Year 9/79 to 12/80
National & World News

FIRST PORTABLE COMPUTER

Adam Osborne sold Osborne Books to McGraw-Hill and started Osborne Computer. Its first product, the 24 pound Osborne 1 "portable", cost \$1795. The Osborne 1 was easily identified by its tiny built-in screen. Osborne also started the practice of bundling software with the computer - the Osborne 1 came with nearly \$1500 worth of programs! Unfortunately Osborne went bankrupt when it pre-announced its next computer while still trying to sell the Osborne 1.

Bill Gates licensed MS-DOS in 1980.



MHS Senior Year 9/79 to 12/80
National & World News

FASHION

Feathered hair (known as the Farah Fawcett hair style)

Bell bottoms

Chukka Boots

Hip huggers

Clogs

Designer jeans

Leisure suits

Short shorts

Blue eye shadow

Cutoff shorts

Pink blush

Puka beads

Mood rings

Mini, skirts

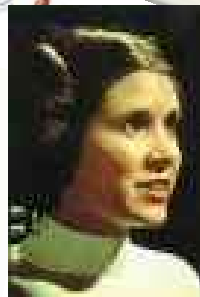
Silver Jewelry

Maxi skirt

Big hoop earrings

Tube tops

Platform shoes



THANK YOU

MHS CLASS 1980 would like to take this opportunity to *Thank All Teachers* who have briefly stepped into our lives over the years.

Sonnet For Unforgettable Teachers

When I began your class I think I knew
The kind of challenges you'd make me face.
You gave me motivation to pursue
The best, and to reject the commonplace.

Your thinking really opened up my mind.
With wisdom, style and grace, you made me see,
That what I'd choose to seek, I'd surely find;
You shook me out of my complacency.

I thank you now for everything you've done;
What you have taught me I will not outgrow.
Your kind attention touched my mind and heart;
In many ways that you will never know.

I will remember you my whole life through;
I wish that all my teachers were like you.

By Joanna Fuchs

CLASS INFORMATION

➤All MHS Alumni Club:

An all-school alumni club has been formed. They meet the first Wednesday of each month at the FOP Lodge 1825 East 12th Street in Mishawaka at 11:00a.m. Lunch is only \$7.00. Meetings are included in your two year membership fee of \$25 (single membership) or \$35 (couples membership). With the membership you will also receive a plastic laminated membership card, your name in the in the Alumni Directory (printed each spring) and the monthly newsletter.

For more information contact John C. Moore at 511 Rivers Edge Ct, Mishawaka, IN 46544, Phone 574-582-2545 or email jmoore3026@aol.com.

➤Roger Hintz MHS Website:

Roger has created a website with several links to MHS and related Mishawaka subjects. Roger's website address is: <http://www.rogerhintz.com/mhs80/>

On Rogers's website will be pictures and booklet from our 30th Reunion . Please check back periodically for Class of 1980 updates.

➤Classmate information changes:

Should your address, phone number, email address or name change before the next reunion in 2015 please go to <http://www.rogerhintz.com/mhs80/> and complete the form. It will then be sent to the reunion committee. Please remember that it takes a lot of time searching for everyone so this will help a great deal.

IN MEMORIAM

They never quite leave us
Through the shadow of Death
To the sunlight above
A thousand sweet memories
Are holding them fast
To the places they blessed
With their presence and love.

Deceased Classmates:



Rich Arnold
1961 - 1986



Scott Salyers
1961 - 1987



Charlie Drake
196x - 1990



Teresa Gorny
196x - 1996



Mike Barbara
1961-1998



Doug Magnuson
196x - 1998



Janet Wilson
196x - 1998



Greg Krakoske
1962 - 2005

IN MEMORIAM

They never quite leave us
Through the shadow of Death
To the sunlight above
A thousand sweet memories
Are holding them fast
To the places they blessed
With their presence and love.

Deceased Classmates:



Tammy Ford

1961 - 2007

Greg Hall

1961 - 2003



Chris Allison

1961 - 2005

Jeff Wilder

1961 - 2007



Andy Egenfoerfer

1961 - 2005

John Sowell

1961 - 2006



Doug Carrico

1961 - 2007